



Anderson Engineering™
of New Prague Inc.

Construction Defect Case Study

Construction Defect matters are more common now than ever before. The landscape for Construction Defect cases has changed. In the past, it was relatively easy to get most, if not all, of the sub-contractors that helped build a development, or large structure, to pay the plaintiffs to settle the case. More recently, it has become apparent that it is better to resist the temptation to settle when it can be proven that there are no defects.



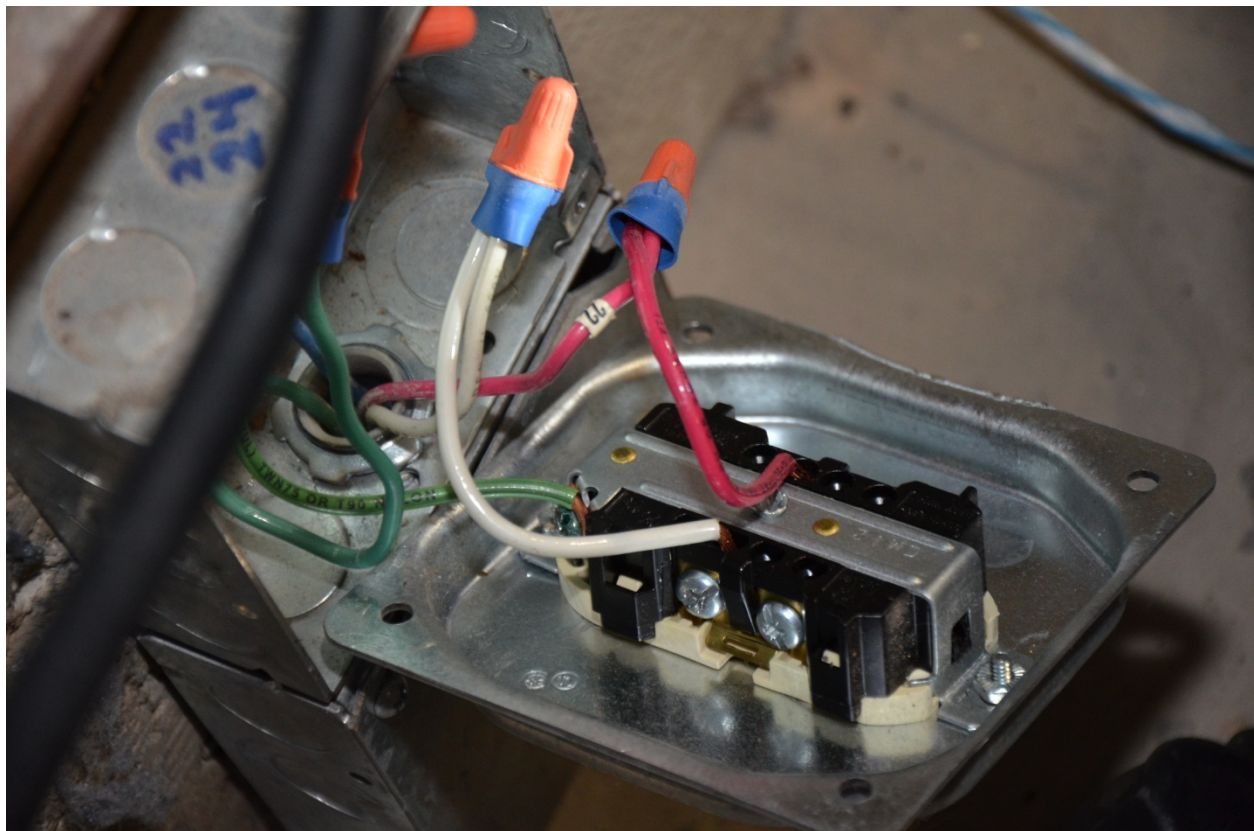
Circuit Breaker Panelboard.

Anderson Engineering has been instrumental in helping electrical designers and contractors defend themselves, and their work on new construction, when they are brought into a construction defect case. Rarely are there any issues of substandard

equipment, devices, or workmanship. We have been able to successfully defend numerous clients that wired new developments and large structures.

By examining the electrical installation of the distribution equipment and the overcurrent protection devices, along with the other devices attached, i.e. switches, receptacles, lights, and appliances, it was proven that the electrical contractor installed a very capable electrical system. The National Electrical Code governs how electrical systems must be installed and the approved wiring methods.

Using the codes, and our extensive knowledge, we were able to prove that there were no construction defects associated with the electrical systems installed in various developments and large structures.



Wiring inside a junction box to a receptacle.